

MEGALINE

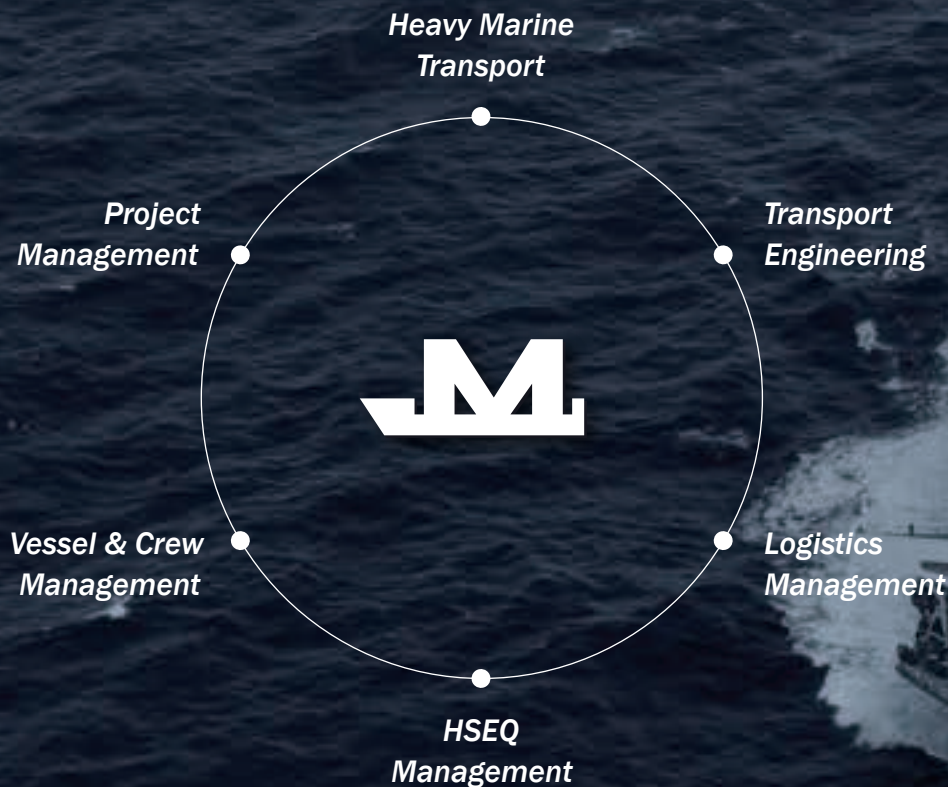
ONE STOP SOLUTION FOR HEAVY MARINE TRANSPORTATION



Your
Cargo
Responsibility Our
Concern

COMPANY PROFILE

Megaline is dedicated to provide reliable **Heavy Marine Transport** solutions



Megaline is one of the leading Heavy Marine Transportations (HMT) company headquartered in Seoul, South Korea. We have become one of the most reliable global HMT expert, providing service to renowned clients all over the world.

The main shareholder of Megaline is KCTC; the best comprehensive logistics company in Korea listed on the Korean Stock Exchange since 1978.

Megaline has built its in-house engineering center, equipped with market-leading software, comprising a versatile field of engineering to support challenging, project-specific requirements.

Megaline has delivered excellent transportation service in vessel operation and engineering with the utmost safety for more than a decade.

Milestones

ITW Megaline Co., Ltd. established
MV. MEGA CARAVAN2 delivered in Aug 2011

CVC (Consecutive Voyage Charter) contract for
“Gorgon LNG Project” with **CHEVRON**, Australia

Awarded the “**Best Vessel**” & “**Quarantine**
Champion” Prize by **CHEVRON**

Awarded “**Best Company for Safety**
Management & PSC control” Prize by **KR (Korean Register)**

Completed “Gorgon LNG Project” for **CHEVRON**, Australia

Transported offshore modules for “**Gina Krog**
Project” with **STATOIL (EQUINOR)**, Norway

Long-term contract with **SHI (Samsung Heavy**
Industry) for ship blocks transportation

CVC contract with **LINDE**, Germany for “**New Pitch**
Gasification Plant Project” in Singapore

Renewed Long-term contract with **SHI**

Oct 2009	HMT Megaline Co., Ltd. established MV. MEGA CARAVAN delivered in Apr 2011
Jan 2010	
Jun 2010	Long-term contract with DSME for ship blocks transportation
Feb 2012	
Dec 2013	Awarded and participated in the “Transportation & Installation Industry Study” hosted by Korean Government
Feb 2014	
Aug 2014	Completed “ Wheatstone LNG Project ” for CHEVRON, Australia
Jun 2015	
Jun 2015	Awarded “ Best Company for Maritime Safety ” Prize by the MOF (Korean Ministry of Oceans and Fisheries)
Feb 2016	
May 2016	Transported FPSO modules for “ TUPI Project ” with PETROBRAS , Brazil
Sep 2016	
Jun 2017	Chartered by LAMPRELL , UAE and transported OWF Jackets for “ East Anglia Project ” in the North Sea
Jan 2018	
Apr 2019	Chartered by HMC , Netherlands and transported Offshore platform for “ NOC Gallaf Al-Shaheen Project ” in Qatar
Jul 2019	
Jun 2020	Renewed Long-term contract with DSME
May 2021	
Mar 2022	Awarded “ Gallaf 3 Project ” in Qatar & “ Marjan Project ” in KSA with HMC

Cf.) MV. MEGA TRUST (Delivered in 2008)
MV. MEGA PASSION (Delivered in 2010)

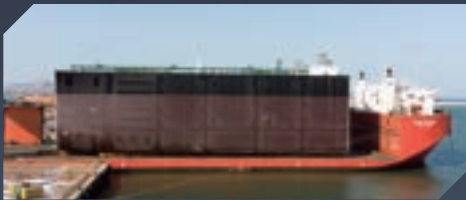
COMPANY PROFILE

Cargo Type



MODULES

Modularized cargoes for onshore industrial projects



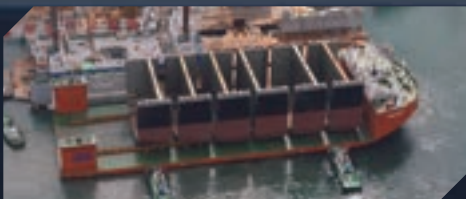
HULL STRUCTURES

Hull structures, vessel launch



PORT EQUIPMENT

STS Cranes, RTGCs, Jib Cranes, Grab Unloaders



SHIP BLOCKS

GIGA/MEGA ship blocks



OFFSHORE STRUCTURES

Offshore Jackets & Flare Booms, Wind Farm Jackets



FLOATING PLATFORMS

Drilling Rigs, SGS, Dry Tree Units, Tension-leg Platforms



WIND ENERGY COMPONENTS

Transition Piles, Piles, Wind Blades

Major Projects

GORGON LNG

Modules, PAU/PARs, GTGs
2,500 ~ 10,700 mt
from Asia/Europe to Australia
4 years charter for 3 vessels



JOHAN SVERDRUP

Leg Extensions &
Suction Caissons
13,100 mt
from UAE to Norway



WHEATSTONE LNG

Steel Gravity Structure
36,000 mt
from Korea to Australia



GINA KROG

Topside Modules, Flareboom
Total 20,000 mt
from Korea to North Sea



TUPI FPSO

FPSO Modules
Total 15,000 mt
from Brazil to China



AMRUN

Onshore Modules
2 shipments
Total 5,123 mt



EAST ANGLIA

Horizontal Windfarm Jackets
8,500 mt
from UAE to UK

NEW PITCH GASIFICATION

46 Onshore Modules
10 shipments
Total 41,053mt
from India to Singapore

FLEET

MEGA CARAVAN

DWT 16,200 ton



MEGA PASSION

DWT 52,300 ton



MEGA TRUST

DWT 19,200 ton



MEGA CARAVAN 2

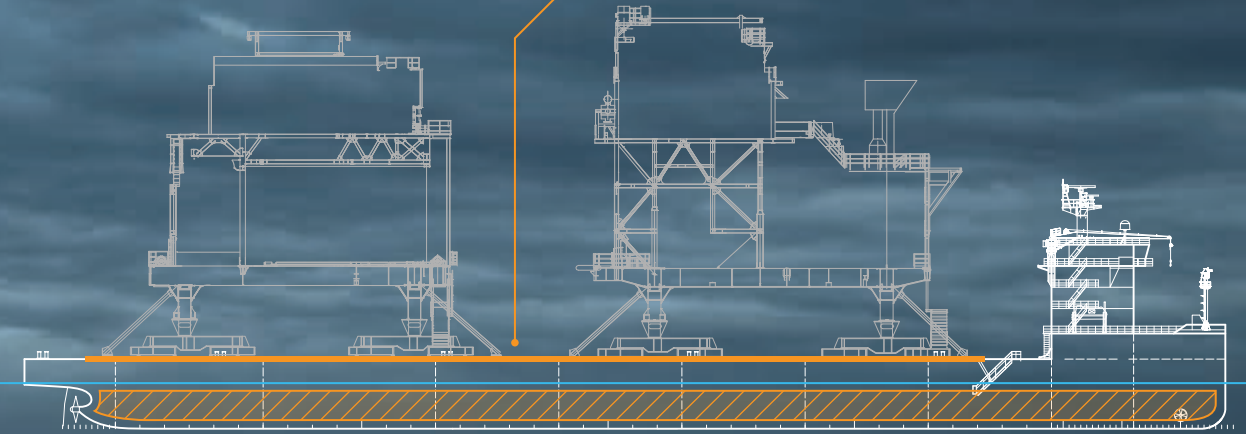
DWT 17,700 ton

Our fleet of 4 (2 owned and controlled + 2 partially owned by parent company of HMT MEGALINE) world-class heavy marine transport vessels defines who we are, and what we are about. Since our establishment, Megaline vessels have continued to demonstrate its capabilities under many demanding circumstances, such as adverse weather conditions and project-specific challenges. However, time and time again, we have relentlessly redefined what is possible and found success on the projects we have served, in a safe and timely manner.

However, behind these massive vessels, rests a small group of professionals who make all this possible by systematically maintaining the vessels to meet international regulations and guidelines. This group consists of project management professionals, who not only ensure the reliability of our vessels but are also responsive to challenges during project execution. As service providers, we understand the need to be flexible at times but more importantly, we must be aligned with our client's targets and objectives. There is no denying we sometimes make mistakes, decisions regretful in hindsight, but at Megaline, we always pursue to learn from these mistakes and at the very core, it is this work ethic and methodology that defines the core asset of our organization, and ultimately, what sets us apart from the rest.

Deck Strength

High deck strength to support heavy cargoes of various footprint



High Ballast Capacity

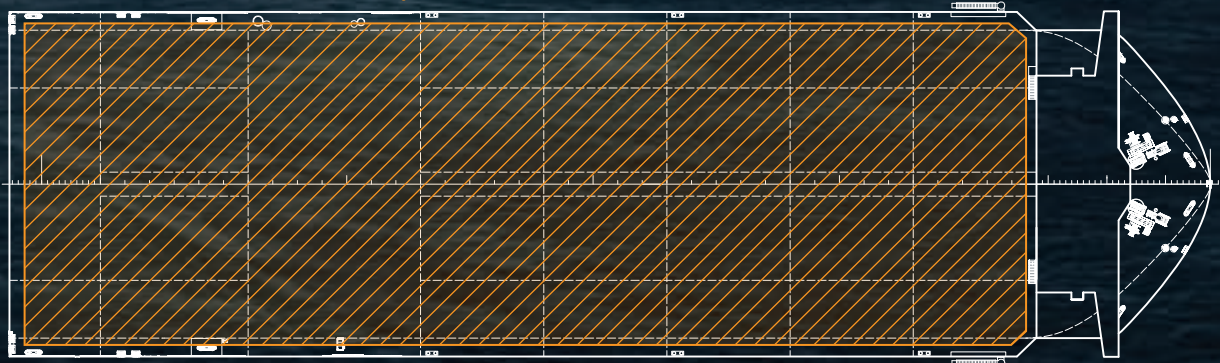
High ballasting capacities for operations in high tidal areas

- Mega Passion 8 x 3,000 m³
- Mega Caravan 4 x 2,500 m³
- Mega Caravan 2 4 x 2,500 m³
- Mega Trust 6 x 2,500 m³

Large Free Deck

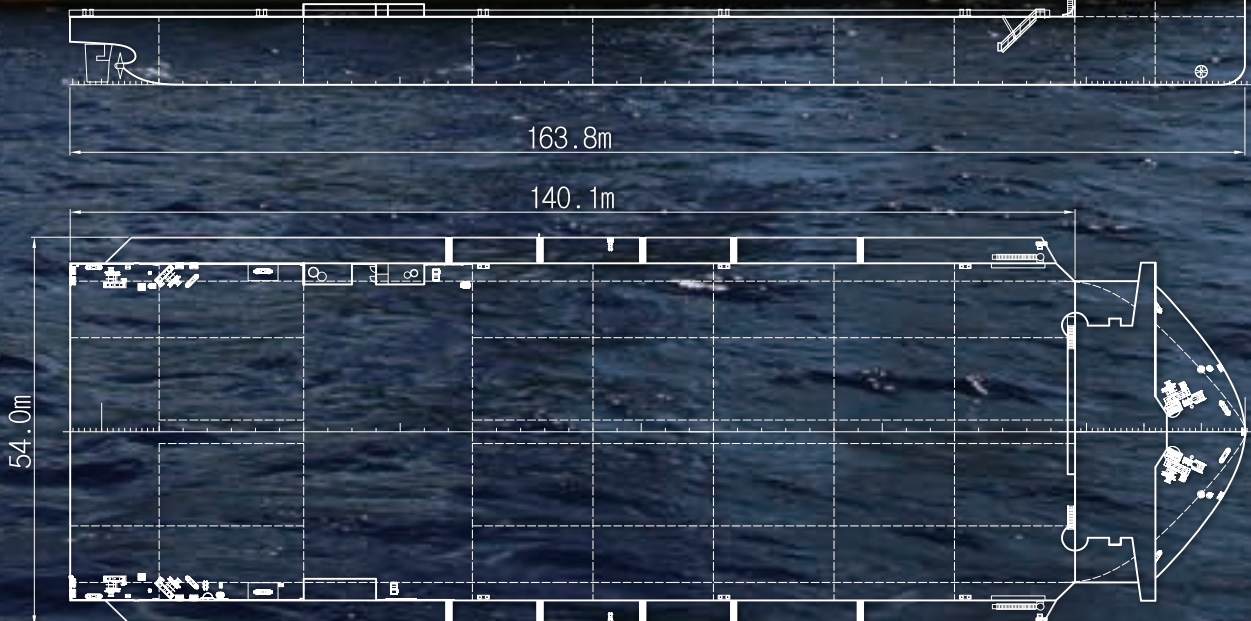
Large deck space to accommodate any extremely oversized cargoes

- Mega Passion 170.7 x 63 m
- Mega Caravan 140 x 54 m
- Mega Caravan 2 140 x 47 m
- Mega Trust 124 x 50 m



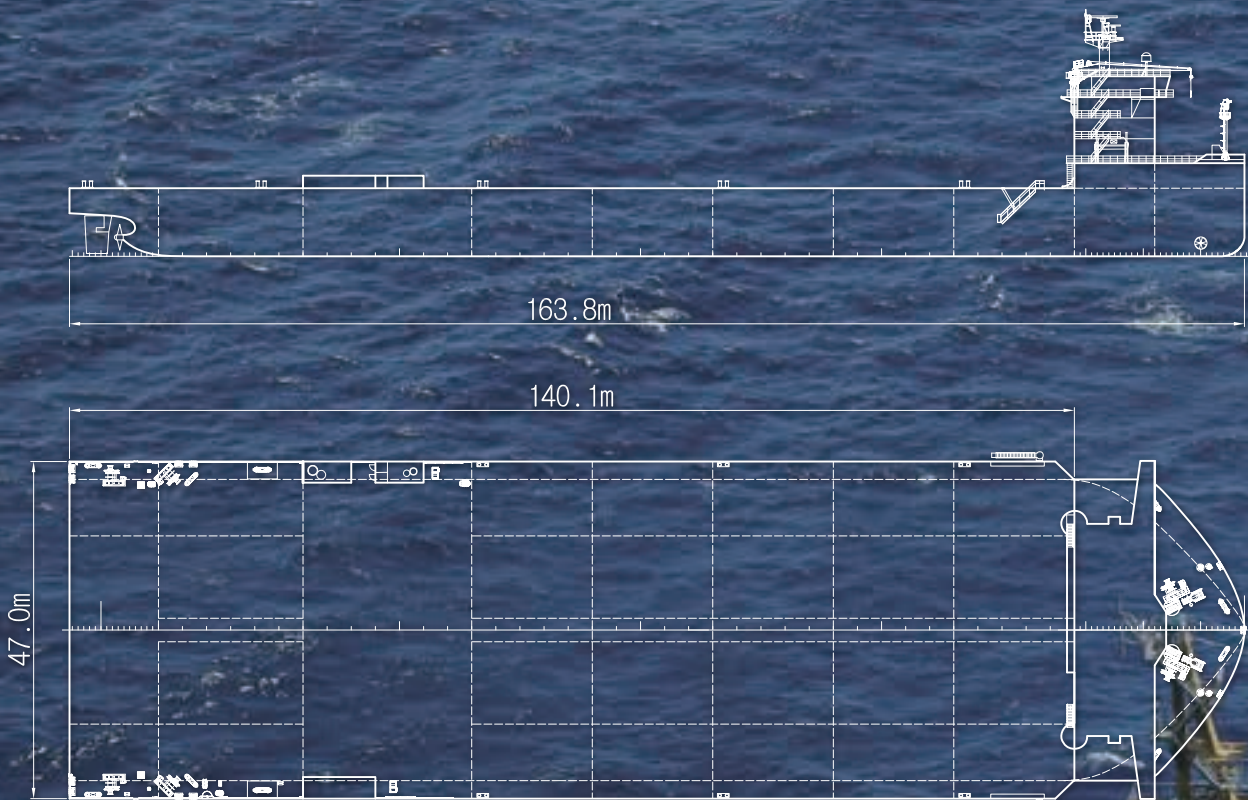
MEGA CARAVAN

Owned and controlled by HMT MEGALINE





<i>Built by</i>	DSME, Korea
<i>Built year</i>	2011
<i>L.O.A.</i>	163.8 m
<i>Breadth</i>	54.0 m
<i>Free deck</i>	140.0 m x 54.0 m
<i>Depth</i>	10.5 m (wide deck)
<i>Draft</i>	6.0 m
<i>D.W.T.</i>	16,200 ton
<i>G.T.</i>	16,403 ton
<i>Speed</i>	12.0 knot
<i>Propulsion</i>	3,900 kw x 2 set
<i>Bunker tank</i>	HFO 1,679 m ³ MDO 340 m ³
<i>Ballast capacity</i>	4 pump 2,500 m ³ /hr



<i>Built by</i>	DSME, Korea
<i>Built year</i>	2011
<i>L.O.A.</i>	163.8 m
<i>Breadth</i>	47.0 m
<i>Free deck</i>	140.0 m x 47.0 m
<i>Depth</i>	9.5 m
<i>Draft</i>	6.0 m
<i>D.W.T.</i>	17,700 ton
<i>G.T.</i>	16,403 ton
<i>Speed</i>	12.0 knot
<i>Propulsion</i>	3,900 kw x 2 set
<i>Bunker tank</i>	HFO 1,679 m ³ MDO 340 m ³
<i>Ballast capacity</i>	4 pump 2,500 m ³ /hr



MEGA CARAVAN 2

Owned by ITW MEGALINE and controlled by HMT MEGALINE



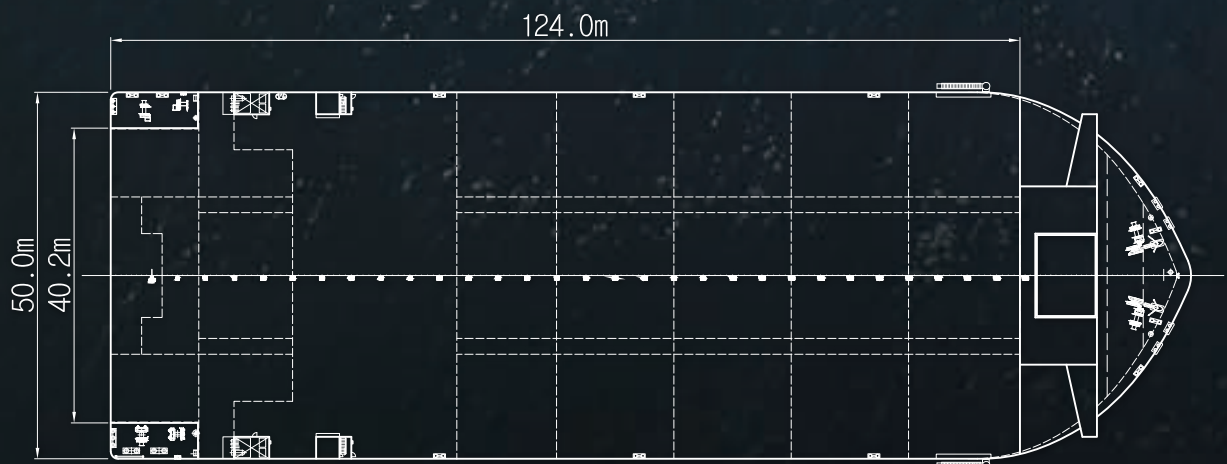
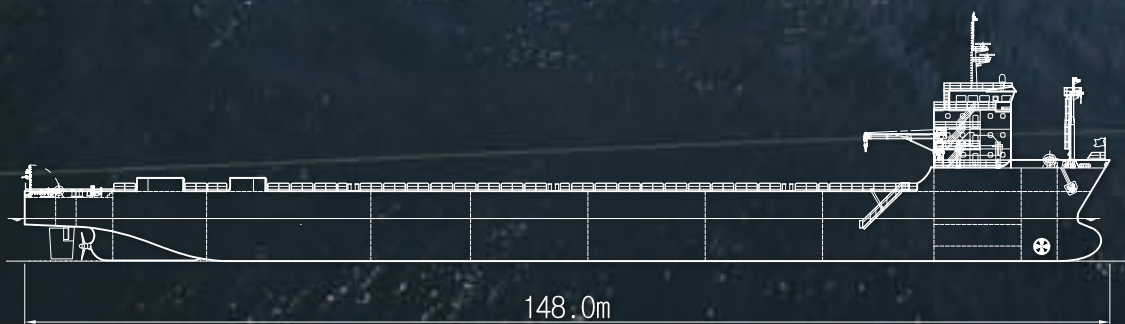


MEGA TRUST

Partially owned by the parent company of HMT MEGALINE



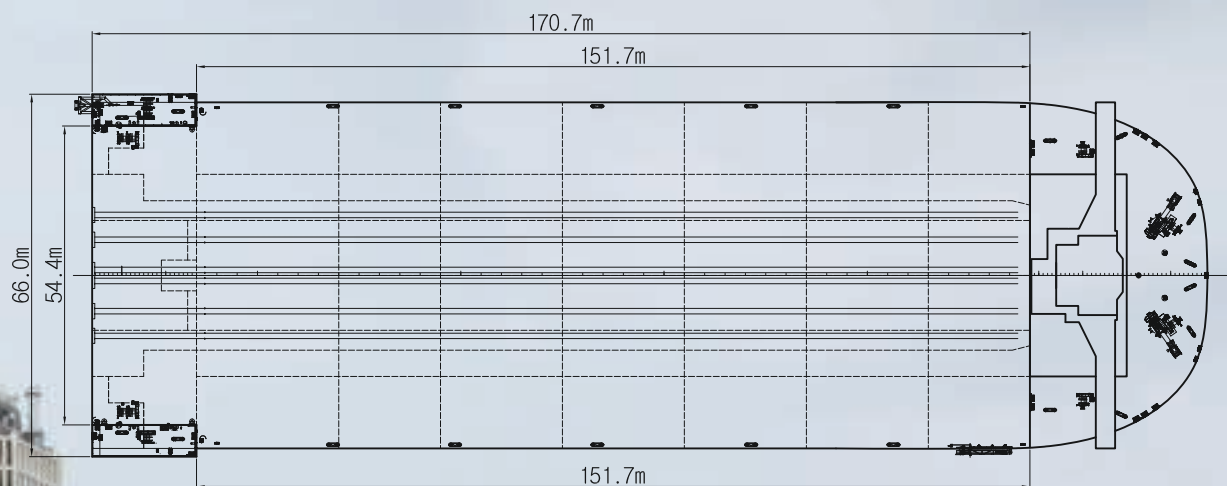
Built by	Shin-An, Korea
Built year	2008
L.O.A.	148.0 m
Breadth	50.0 m
Free deck	124.0 m x 50.0 m
Depth	9.5 m
Draft	5.8 m
D.W.T.	19,200 ton
G.T.	16,463 ton
Speed	12.0 knot
Propulsion	3,900 kw x 2 set
Bunker tank	HFO 1,093 m ³ MDO 199 m ³
Ballast capacity	6 pump 2,500 m ³ /hr



MEGA PASSION

Partially owned by the parent company of HMT MEGALINE





<i>Built by</i>	DSME, Korea
<i>Built year</i>	2010
<i>L.O.A.</i>	203.0 m
<i>Breadth</i>	63.0 m
<i>Inner breadth</i>	54.4 m
<i>Free deck</i>	170.7 m x 63.0 m
<i>Depth</i>	11.0 m
<i>Draft (submerged)</i>	8.2 m (23.7 m)
<i>D.W.T.</i>	52,300 ton
<i>G.T.</i>	41,986 ton
<i>Speed</i>	12.0 knot
<i>Propulsion</i>	4,000 kw x 2 set
<i>Bunker tank</i>	HFO 3,053 m ³ MDO 692 m ³
<i>Ballast capacity</i>	8 pump 3,000 m ³ /hr

ENGINEERING

Guideline: DNV-OS, DNV-RP, GL-ND, ISO 19901-6, KR, ABS, AISC, OCIMF, IMO etc.

FEASIBILITY STUDY

Provide our Clients with the suitable vessel

Stowage plan

Stability & structural analysis

Motion analysis

Vessel reinforcement study



TRANSPORT ENGINEERING

Providing solutions to safe voyage

Voyage plan

Intact & damage stability

Local & global strength analysis

Grillage & seafastening design



LOADING & DISCHARGING

Proper method for safe execution

Ballast plan

Mooring plan

Grillage installation

Loading & discharging supervision



VOYAGE MONITORING

Vessel and cargo safety is of the utmost essential

Cargo safety

Transport route

Motion amplitude

Weather evaluation



HSEQ

Health | Safety | Environment | Quality

Top 5 Priorities



HEALTH



SAFETY



SECURITY



ENVIRONMENT



QUALITY

HSEQ Management Policy

- Safe navigation
- Disaster, accident, environment pollution prevention
- Compliance to health, safety, environment – related laws and rules
- Evaluation of all discerned risk factors pertaining to the ship, personnel and environment
- Customer satisfaction management
- Continuous improvement and sustainment of the HSEQ management system

Megaline Management System is certified,

ISO 9001 - Quality Management System

ISO 14001 - Environment Management System

ISO 45001 - Occupational Health & Safety
Management System



ISO 9001



ISO 14001



ISO 45001



Website www.hi-megaline.com
Inquiries marketing@hi-megaline.com
Career cpm@hi-megaline.com

Seoul Office

Add: #1401 Namgang Tower, 15 Mugyo-ro,
Jung-gu, Seoul, 04520 Republic of Korea

Tel: +82 (0)2 752 3400

Fax: +82 (0)2 6280 3402

